

Why do you choose



Polycarbonate sheet

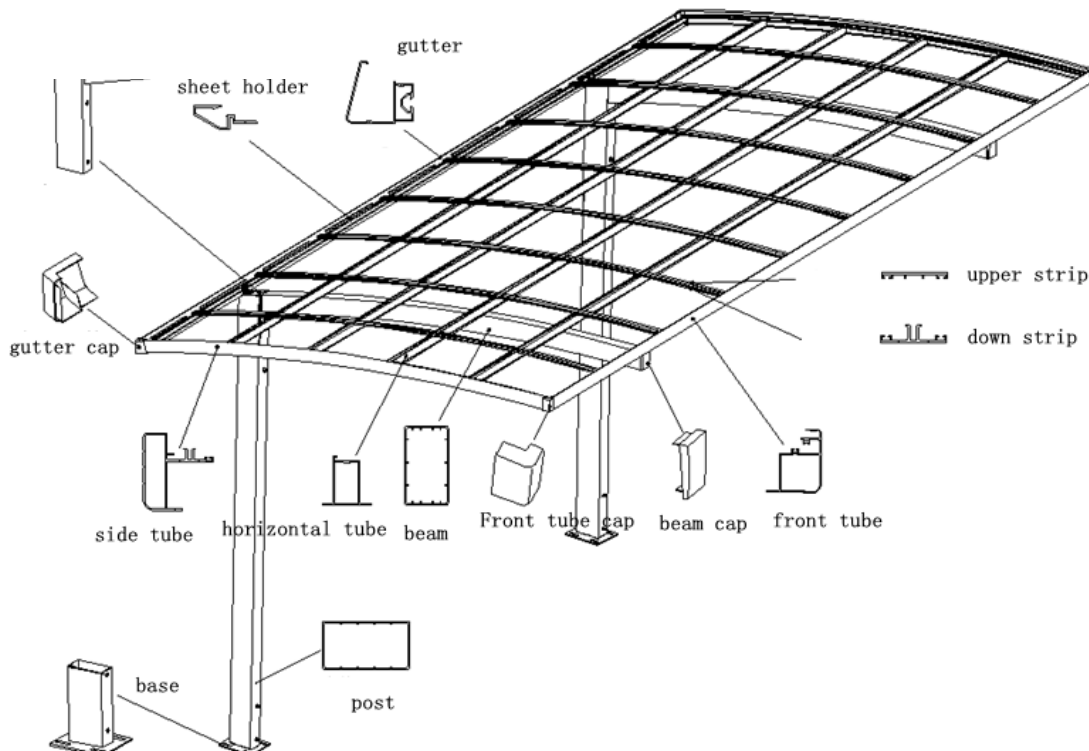


Our Polycarbonate UV grades is Bayer brand -Made in Germany, this sheet is an enhanced UV-resistant sheet, with exceptional weatherability and superior impact strength it is a perfect choice for extended service life and resistance to colour shift or fade.

Currently the best Polycarbonate material on the market.



GET FAMILIAR WITH KANGADO CARPORTS PARTS AND MATERIAL



POST

**CHECK THE DIFFERENCE IN SIZE AND THE MATERIALS,
KANGADO POSTS ARE MADE TO BE APPLICABLE TO THE AUSTRALIAN STANDARD**

162*88mm



From **KANGADO**

156*86mm



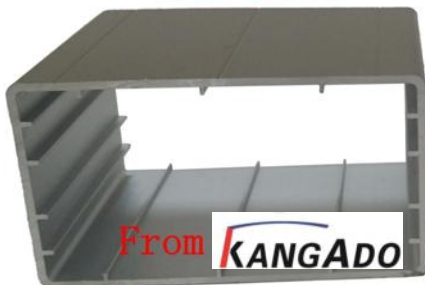
Others Suppliers



Differences

CHECK THE DIFFERENCES BETWEEN THE KANGADO SUPPORT BEAMS AND OTHER SUPPLIERS

117*65mm



From **KANGADO**

110*61mm



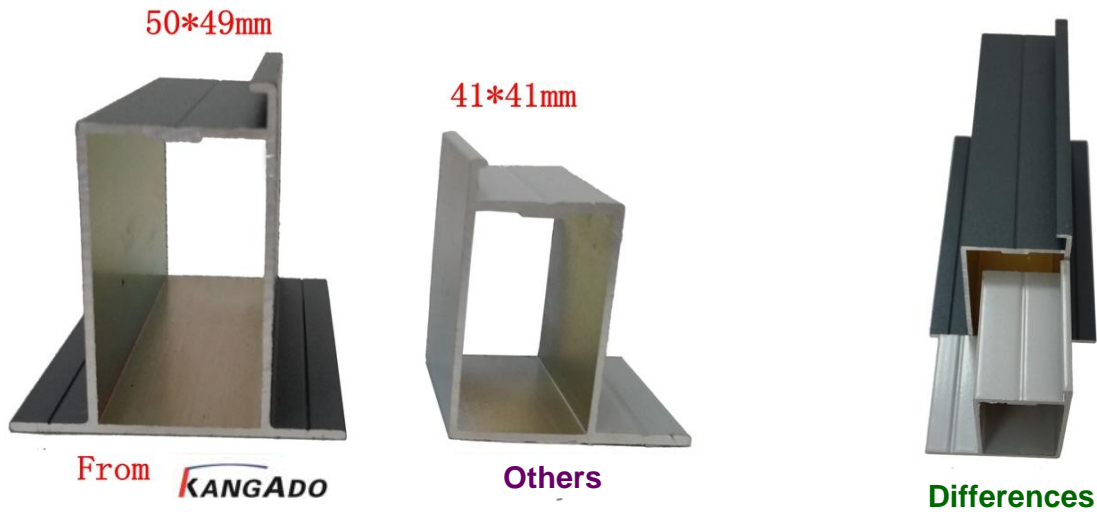
Other suppliers



COMPARE THE DIFFERENCES

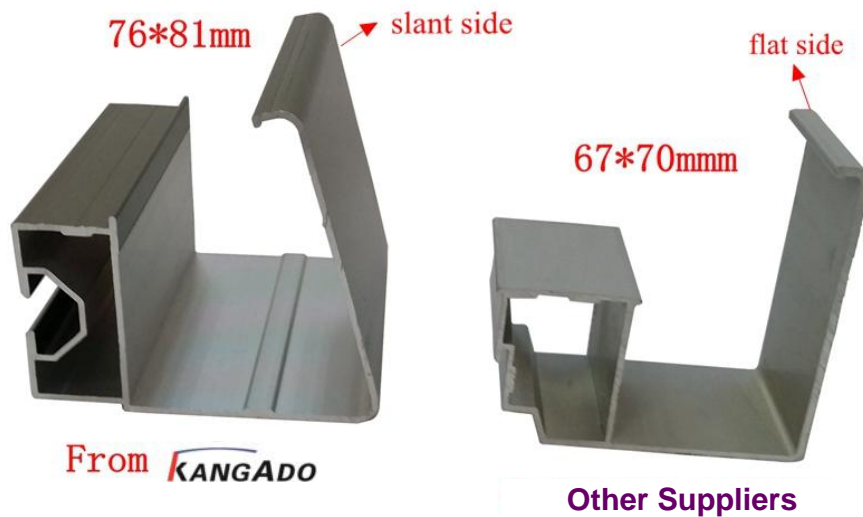
Horizontal tube

The horizontal tube of our carport is 50*49mm. Thickness is 1.35mm. Others suppliers average is 41*41mm with 1.05mm.



Gutter

The function of the gutter is collecting the water and guide it to the ground. Obviously our gutter is much bigger and the section of the gutter is slant. Why we make the gutter slant? If the carport need to make the jointing, the slant gutter can let the two posts joint together and the carport will not have big gap and drop. Please refer the below pictures.





OTHER SUPPLIERS

Big gap between two posts

Nothing cover between the gutters



KANGADO



KANGADO

KANGADO

From KANGADO

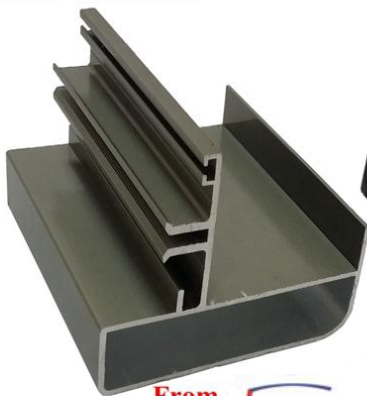
Two posts are jointed together

And the aluminum cover between the gutters is for waterproof

Side tube:

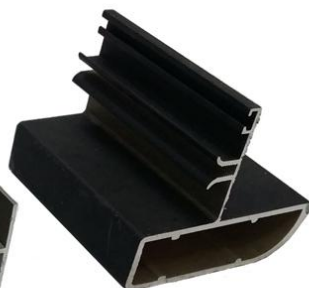
Our side tube has one more panel on the right side on the pictures, it will let the horizontal tubes hidden on the panel and it make the carport looks more beautiful. On the same time, panel can support the horizontal tubes on the structure.

75.5*67.5mm



From KANGADO

68.5*60mm



OTHERS

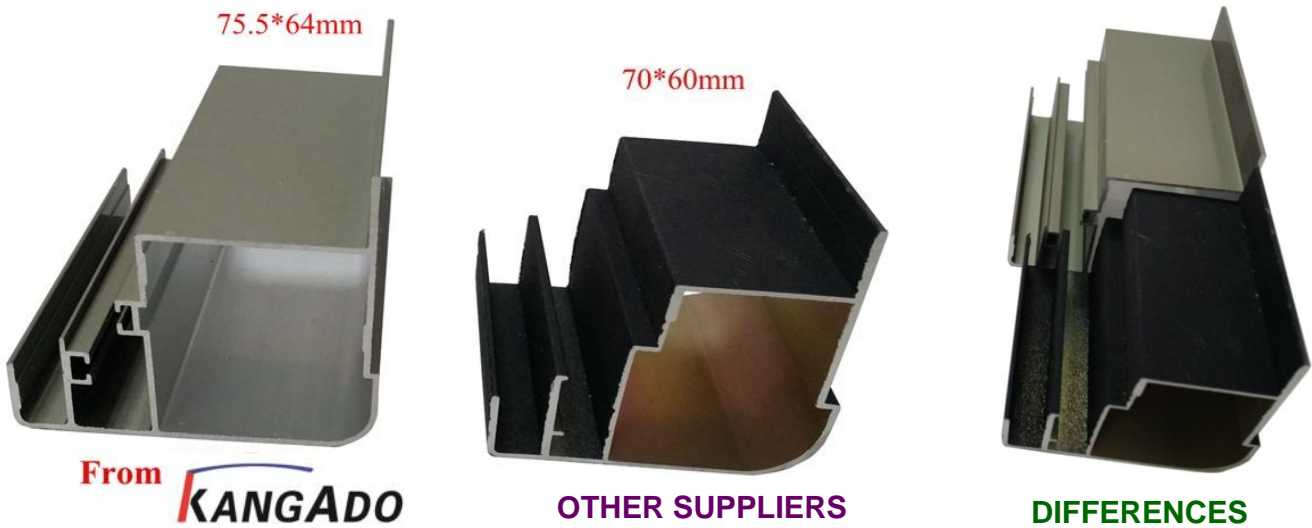


DIFFERENCES

Front tube:

Generally **OTHER SUPPLIERS** do not offer the waterproof strip on the up and down of the polycarbonate sheet which is on the front tube. Only depend the PVC strip which on the bottom of the polycarbonate for waterproof. If so, it is easy to backflow and drop when heavy rain.

KANGADO will offer the EPDM rubber strip on the up and down side of the polycarbonate sheet on the front tube. It will not drop. (please refer the below picture)



Upper strip and down strip

Our strips are bigger and wider. On the same time, our down strip has the obviously match section to let upper strip and down strip match correctly. If not, it is easy to let the upper strip and down strip dislocate. (please refer the below picture)

KANGADO USING THE SELF DRILLING SCREWS,COMPARE TO OTHER SUPPLIERS



Sheet holder:

The function of the sheet holder on the carport is for insetting the polycarbonate sheet. Our design of the sheet holder is let the water out easily. The generally design is keep the water and not easily out.



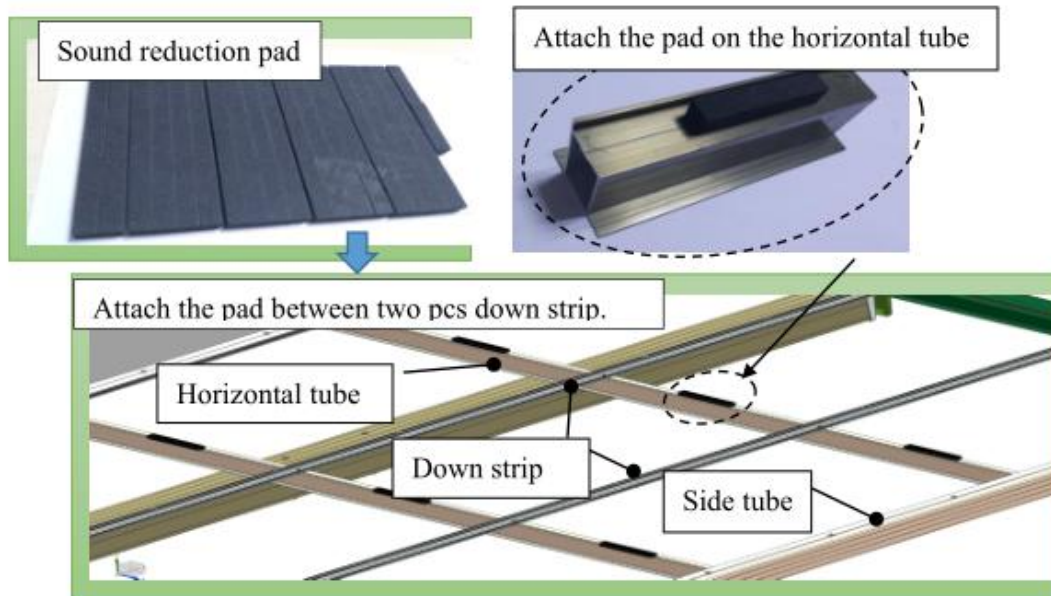
Other suppliers



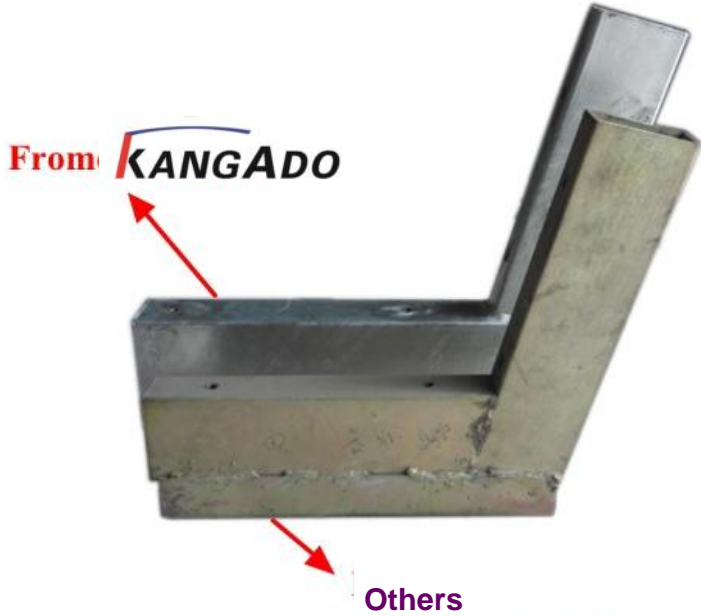
From **KANGADO**

FOAM PADS:

KANGADO WILL SUPPLY FOAM PADS FOR POLYCARBONATE ROOFING TO REST ON THIS PADS REDUCING THE NOISE AND SCRATCHING THE SHEETS FROM THE HORIZONTAL PURLINGS IN WILD WEATHER.

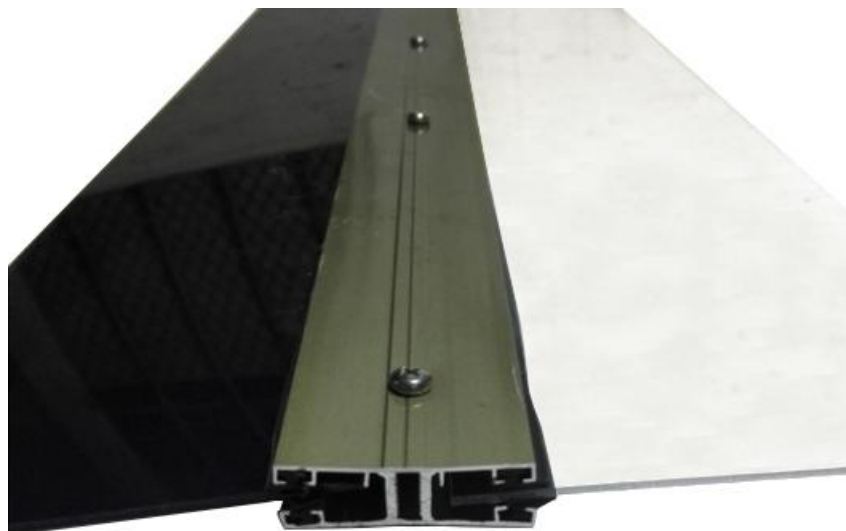


Corner steel brackets, other suppliers using much smaller brackets compare to Kangado Solid galvanise brackets



Rubber strip

The rubber strip is installed on the upper strip and down strip. The function is for waterproof. We will use the EPDM rubber strip rather than the generally pvc strip. Because the EPDM rubber strip is excellent on waterproof. Some companies want to save the cost and will use the pvc strip. PVC strip can not be with the polycarbonate sheet together, because it will make chemical reaction and corrosion.



NICE AND TIGHT SECURED IN PLACE

Cap:

The caps are for cover the four corner on the carport. Our cap is made of aluminum.

compare to plastic corner connectors as other suppliers , get the real deal.



BASE PLATES:

KANGADO BASE PLATES ARE SPECIALLY DESIGN FOR CLIENTS WHO HAS EXISTING CONCRETE , SLIDE THE POST ON THIS BRACKETS AND DYNOBOLT THEM ON YOUR EXISTING CONCRETE.



Conclusion:

**THE FIRST 2 PHOTOS BELLOW ARE ONLY TO SEE THE STRENGTH OF KANGADO PRODUCT
(WE DON'T RECOMMEND TO STAND ON TOP OF THE ROOFING)**



KANGADO